

FINAL DESIGN

Use the information and knowledge you obtained through the previous stages of design process to further design development. The following questions should be clearly answered as you approach the final design of your project:

CONCEPT

Does the concept have original thought demonstrate relevant information?

CONTEXT

Does the site respond to site characteristics, its architectural context, and environment conditions? (Local, Regional and Global)

ORGANIZATION

Does the design apply research in determining function, form and systems? (Spatial and Structural Organization)

EXPRESSION

Is the translation of the concept through the thesis lens in its whole and in its parts? (Moments of Beauty and Delight)

MATERIALS AND ASSEMBLIES

Are the character, application and detail of the materials appropriate to the thesis and demonstrate an understanding of basic principles involved in the application of building systems / assembly?

SYSTEMS

Does the design demonstrate integration of structural and environmental systems? (Mechanical, Lighting, Service Components)

SAFETY, ACCESSIBILITY AND HEALTH

Does the design provide a healthful environment and demonstrate an understanding of human behavior?

COMMUNICATION AND DOCUMENTATION

Is the presentation comprehensive, well crafted, organized, and technically clear?

EXISTING TUNNEL AND NEW SKIN

The form has been developed based on the idea of the womb, an embracing and amorphous shape that envelops the user.

The new extension will exist within the constraint of the existing tunnel. The form will accommodate both existing utilities and the possibility of future spatial opportunity. It also breaks the linearity of the extensive and singular direction of the existing tunnel.

Pinching

Through variation of height, width and depth, the occupant experiences moments of both compression and release. Moving from the openness of the outdoors to the constraints of the tunnel may invoke a feeling of being 'trapped'; fluctuation of space relieves the growth of anxiety. It provides a variation of spatial opportunity to accommodate the needs and wants of the potential user.

Flow

The skins shape themselves to create a flow between one to the next. There is a suggestion of movement to control the flow of people through the space while reducing congestion.

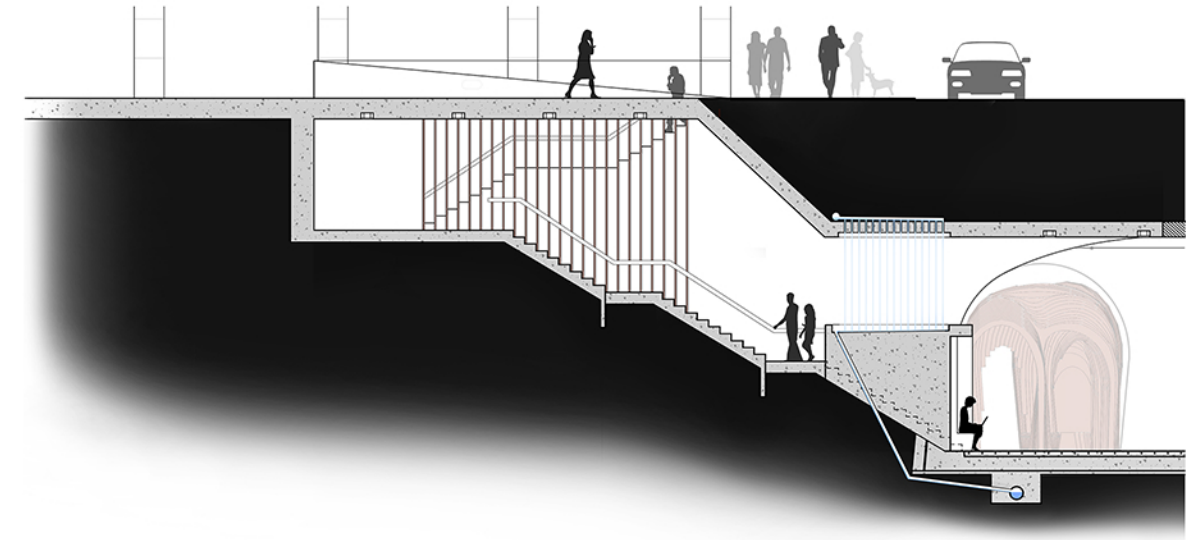
"Nodes"

Within the constraint of the existing tunnel there are spaces known as "nodes". They are small areas, both visually and audibly buffered from the Main Access, which allow the user to step away in a moment of temporary retreat. They are integrated into and formed by the new skin and are designed to be revealed in moments however hidden from a majority of passing pedestrians.

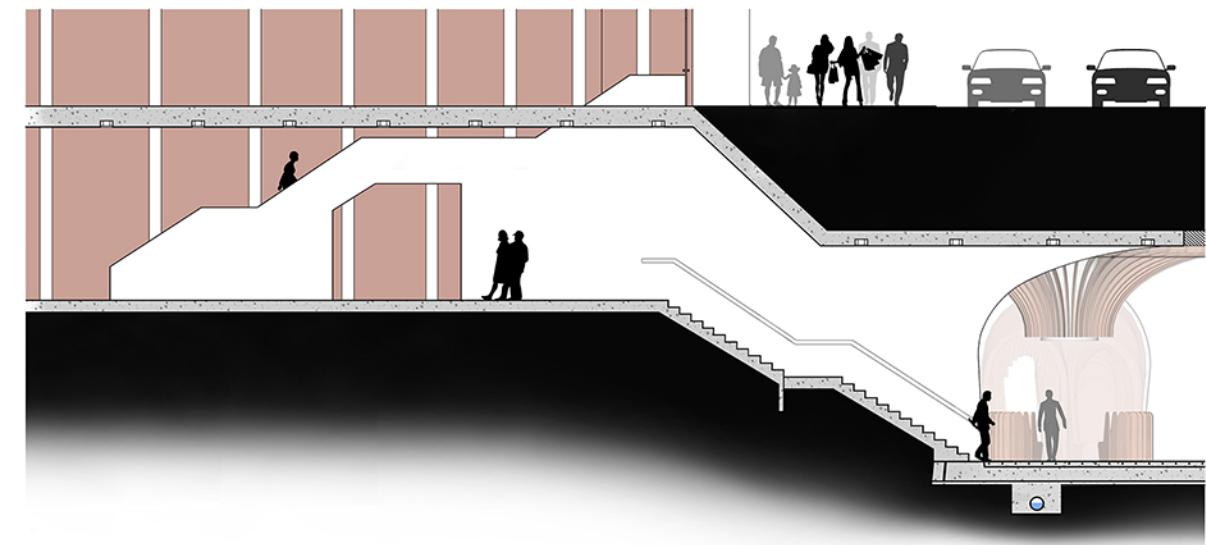
STRUCTURE

The structure has remained much the same as Design Process | Phase III, however the 2x1 wood strapping has been replaced with a more subtle steel cable system.

ENTRY POINT SECTIONS

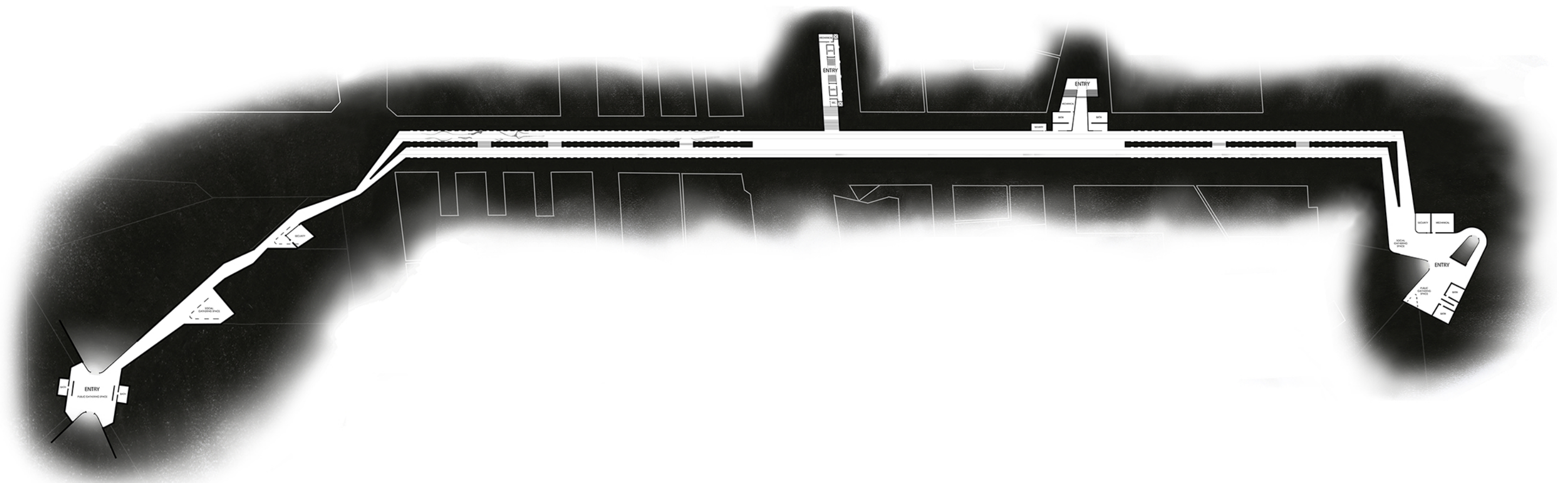


TUFTS MEDICAL CENTER ENTRANCE



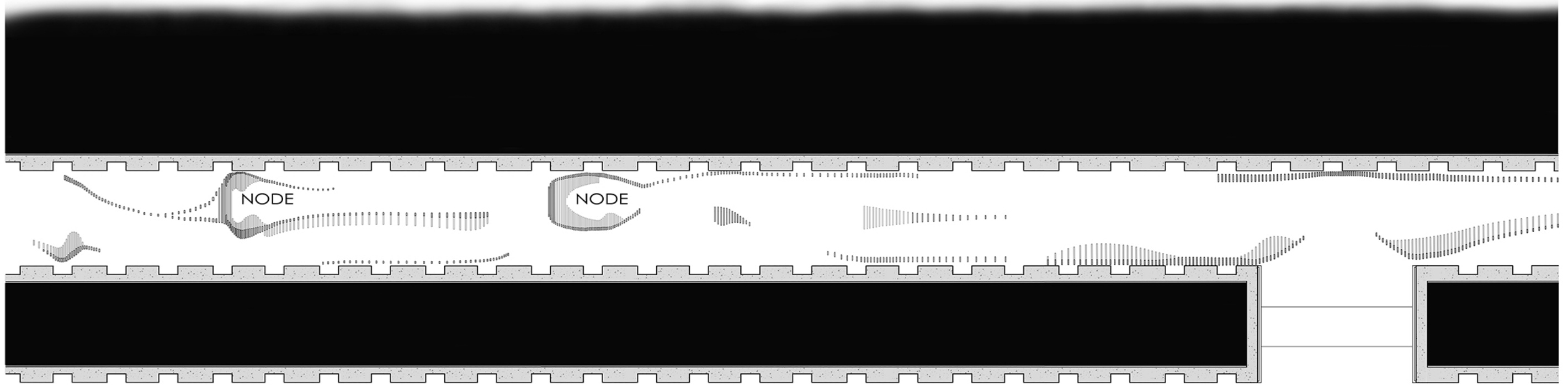
WILBUR THEATER ENTRANCE

SITE PLAN



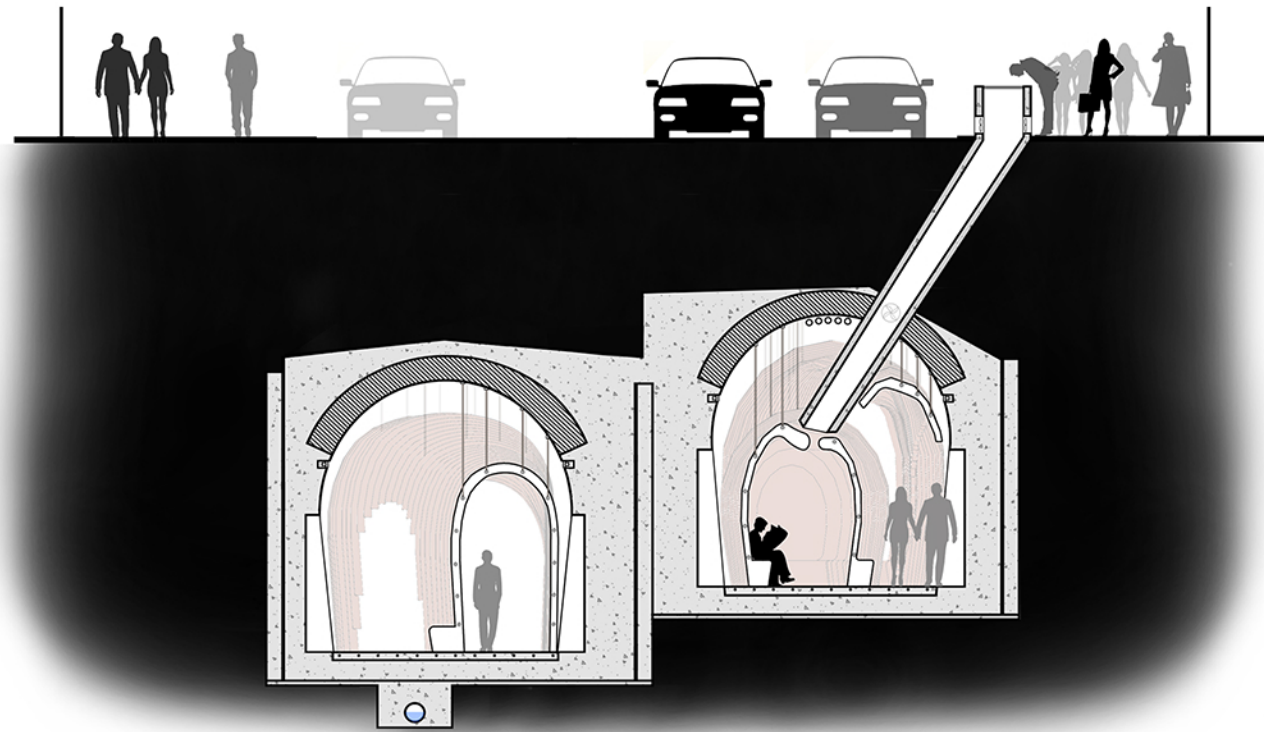
EXISTING TUNNELS AND NEW ENTRY

ENLARGED PLAN

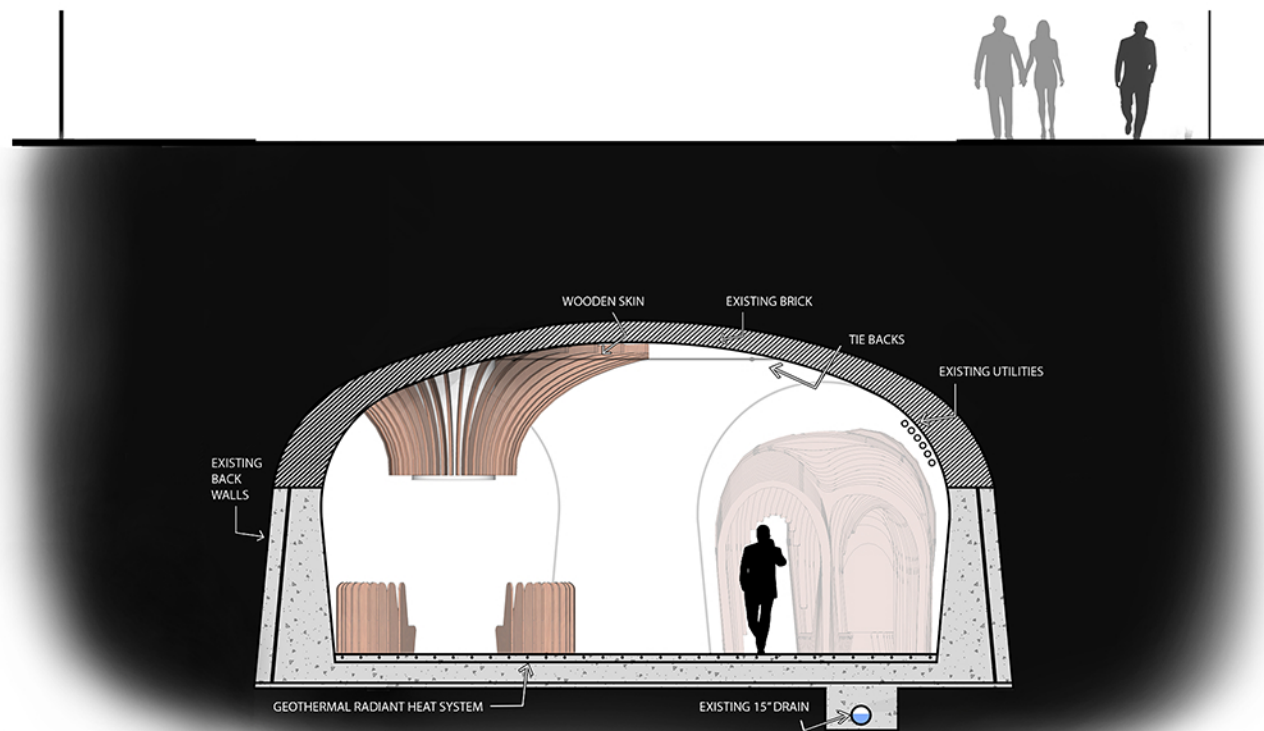


EXISTING TUNNEL AND NEW SKINS

TUNNEL SECTIONS

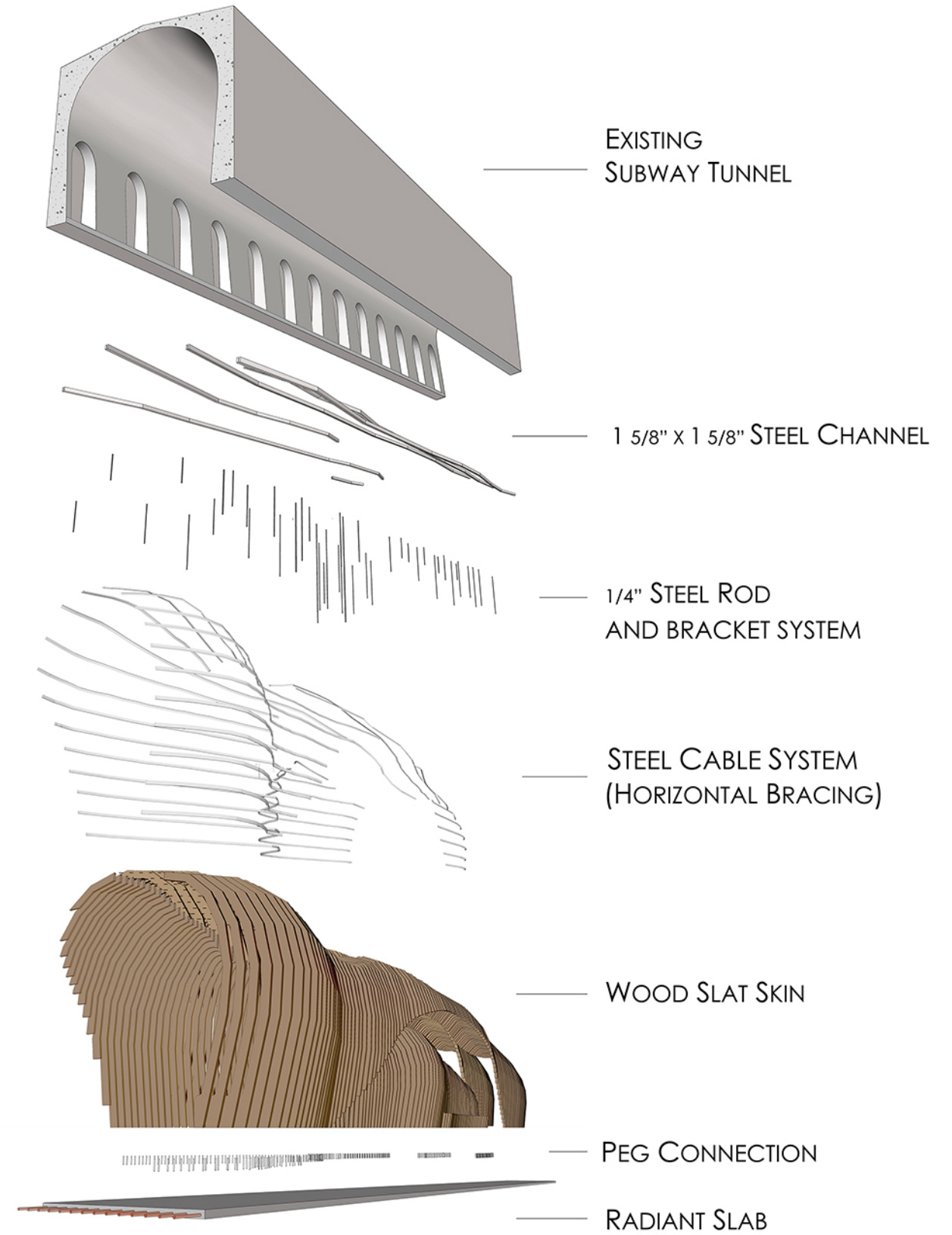


SPLIT TUNNEL

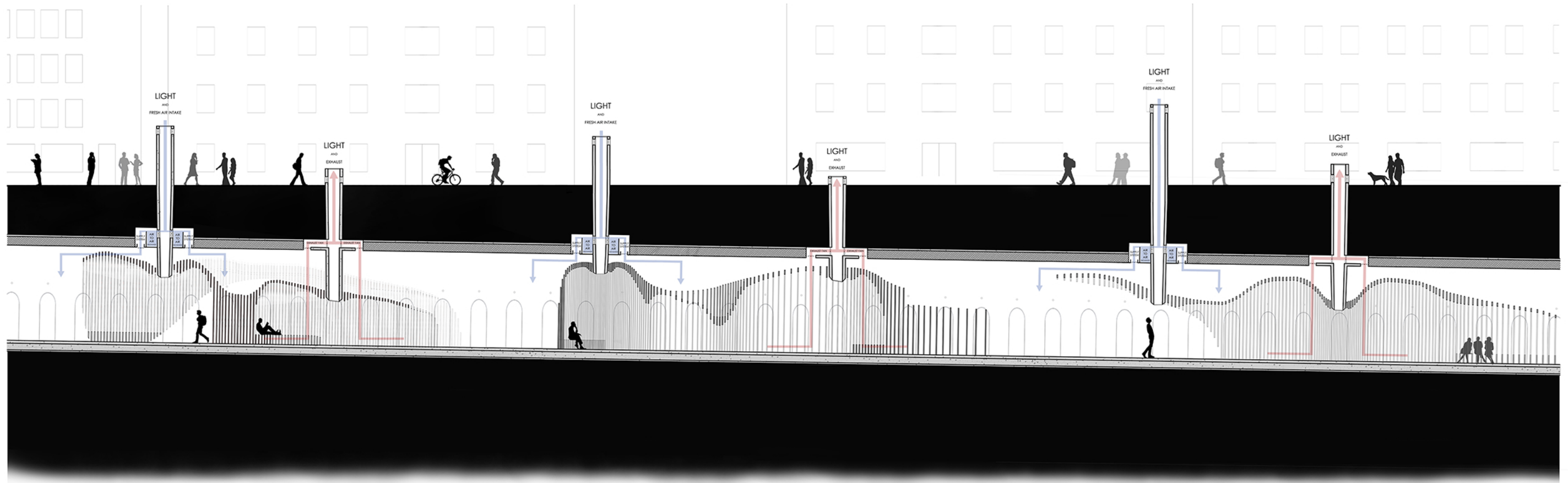


JOINED TUNNEL

EXPLODED ISOMETRIC

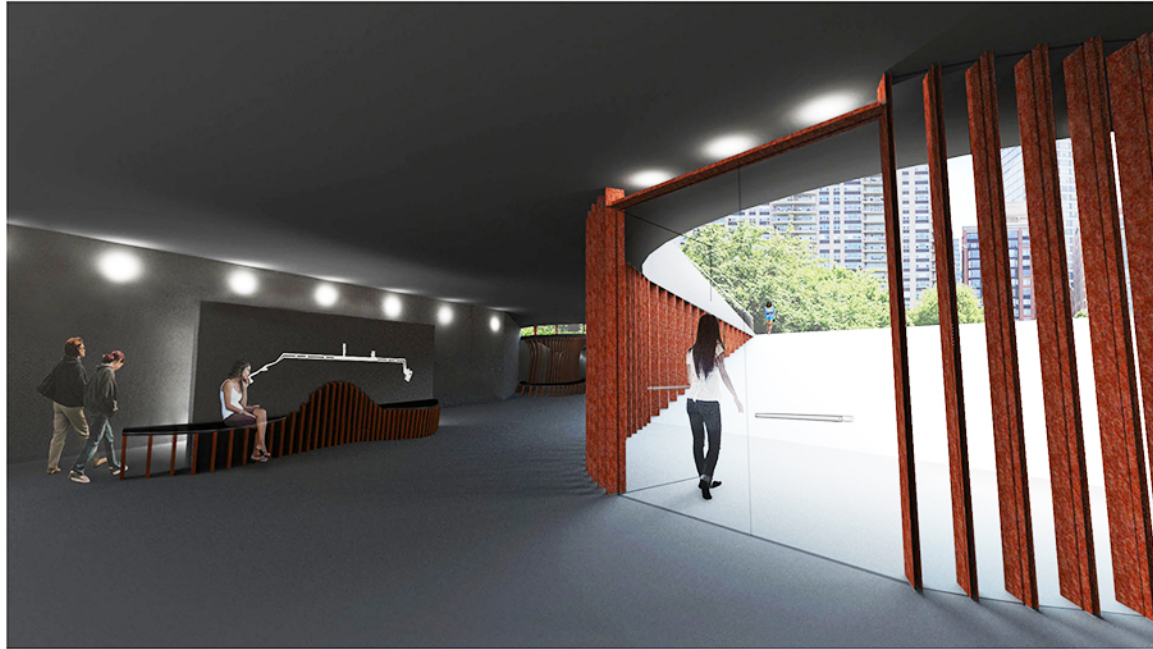


LONGITUDINAL SECTION



EXISTING TUNNEL, NEW SKINS AND HEATING/VENTILATION

EXTERIOR PERSPECTIVES

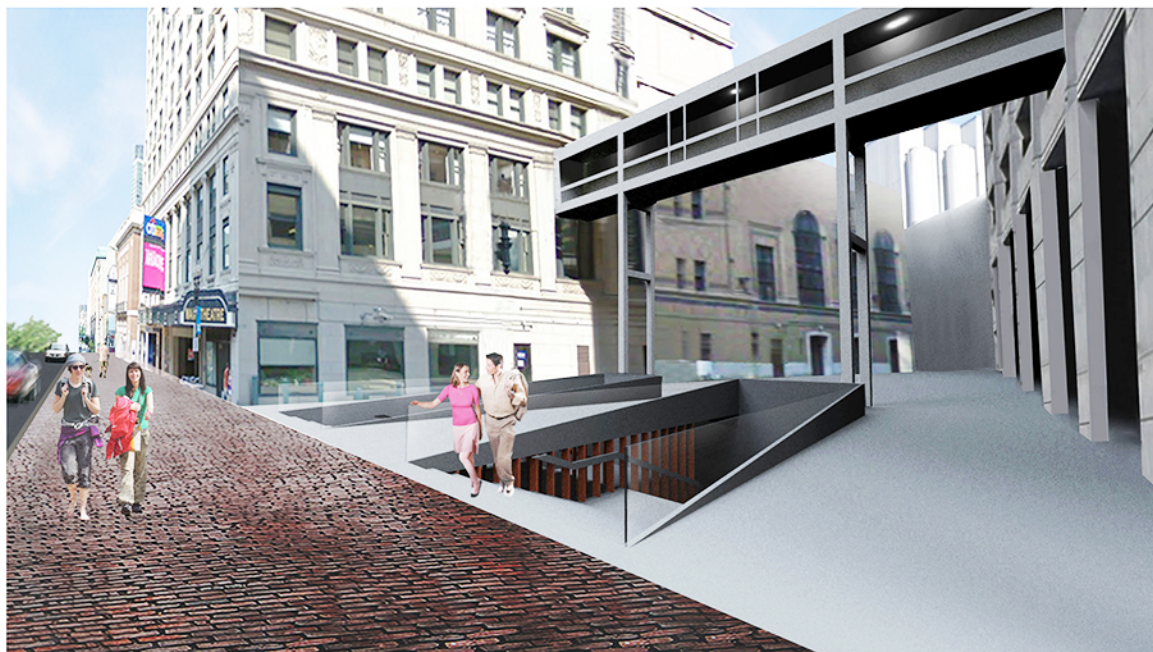


Boston Common Entrance (Interior looking out to Commons)

INTERIOR PERSPECTIVES



Lower (West) Tunnel looking to Upper (East) Tunnel



Tufts Medical Center Entrance (Looking East From Tremont Street)



Personal Meditation Space ("Node")